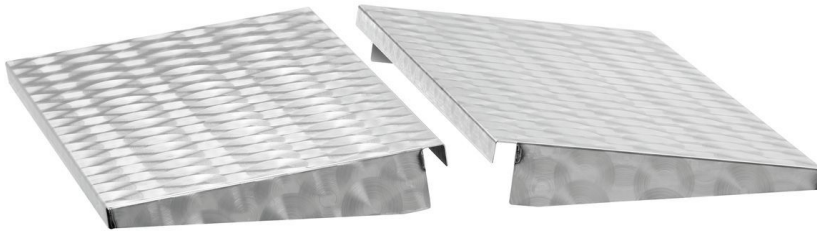


Side table set TB1100



► Designed for the gas-combi tabletop roaster TB1100PF and TB1100R

- Set comprises: 2 side shelves
- Load-bearing capacity, each: 4 kg



Description

Features

- | | |
|-------------------------------------|-------------------------|
| • Set comprises: | 2 side shelves |
| • Material: | Stainless steel |
| • Load-bearing capacity max., each: | 4 kg |
| • Important information: | - |
| • Size: | W 495 x D 268 x H 50 mm |
| • Weight: | 2.26 kg |