



**271107 - 271127 - 271137 - 271147 -
271157 - 271167 - 271177 - 271187 -
271207 - 271139 - 271149 - 271159 -
271169 - 271179 - 271189 - 271209 -
271229**

Bartscher GmbH
Franz-Kleine-Str. 28
D-33154 Salzkotten
Germany

Phone: +49 5258 971-0

Fax: +49 5258 971-120

Technical Support Hotline: +49 5258 971-197

www.bartscher.com



Version: 1.0

Date of preparation: 2020-10-01

Original instruction manual

1	Safety	2
1.1	Explanation of Signal Words.....	2
1.2	Safety instructions.....	3
1.3	Intended Use	5
1.4	Unintended Use	5
2	General information	6
2.1	Liability and Warranty	6
2.2	Copyright Protection	6
2.3	Declaration of Conformity	6
3	Transport, Packaging and Storage	7
3.1	Delivery Check.....	7
3.2	Packaging	7
3.3	Storage	7
4	Technical Data.....	8
4.1	Technical Specifications	8
4.2	List of Components of the Appliance	10
4.3	Functions of the Appliance.....	10
5	Installation and operation	11
5.1	Installation.....	11
5.2	Operation	17
6	Cleaning and Maintenance	18
6.1	Safety Instructions for Cleaning	18
6.2	Cleaning.....	18
6.3	Maintenance	19
7	Possible Malfunctions.....	20
8	Disposal.....	20



Read this instruction manual before using and keep it available at all times!

This instruction manual contains information about installation, operation and maintenance of the appliance and constitutes an important source of information and reference guide. The knowledge of all operational and safety instructions included in this manual is a prerequisite for safe and proper handling of the appliance. Additionally, accident prevention, occupational health and safety, and legal regulations in force in the area the appliance is used apply.

Before you start using the appliance, especially before turning it on, read this instruction manual in order to avoid personal injuries and property damages. Improper use may cause damage.

This instruction manual forms an integral part of the product and must be stored in an immediate vicinity of the appliance and be available at all times. The instruction manual should be transferred together with the appliance.

1 Safety

EN

This appliance has been manufactured in accordance with technical standards currently in force. However, the appliance may be a source of hazards if used improperly or contrary to its intended purpose. All persons using the appliance must consider information included in this instruction manual and observe safety instructions.

1.1 Explanation of Signal Words

Important safety instructions and warning information are indicated in this instruction manual with appropriate signal words. You must strictly follow the instructions, to prevent accidents, personal injuries and property damages.



DANGER!

The signal word **DANGER** warns against hazards that lead to severe injuries or death if the hazards are not avoided.



WARNING!

The signal word **WARNING** warns against hazards that may lead to moderate or severe injuries or death if the hazards are not avoided.



CAUTION!

The signal word **CAUTION** warns against hazards that may lead to light or moderate injuries if the hazards are not avoided.

IMPORTANT!

The signal word **IMPORTANT** indicates possible property damages, which may occur if safety instructions are not observed.

NOTE!

The symbol **NOTE** indicates subsequent information and guidelines for the user on usage of the appliance.

1.2 Safety instructions

Electrical Current

- Too high a mains voltage or incorrect installation may cause electric shock.
- The appliance may be connected only if data on the rating plate correspond with the mains voltage.
- To avoid short-circuit, the appliance should be kept dry.
- If there are malfunctions during operation, disconnect the appliance from the power supply.
- Do not touch the appliance's plug with wet hands.
- Never take hold of the appliance if it has fallen into water. Immediately disconnect the appliance from the power supply.
- Any repairs or housing opening may be carried out by professionals and relevant workshops only.
- Do not transport the appliance, holding it by the power cord.
- Do not allow the power cord to come into contact with heat sources or sharp edges.
- Do not bend, pinch nor knot the power cord.

- Always completely unwind the power cord.
- Never place the appliance or other objects on the power cord.
- Always take hold of the plug to disconnect the appliance from the power supply.

- Check the power cord regularly for damage. Do not use the appliance if the power cord is damaged. If this cable is damaged, it must be replaced by customer service or a qualified electrician in order to avoid dangers.

Operating Personnel

- The appliance may only be operated by qualified personnel and trained specialist personnel.
- This appliance may not be operated by persons (including children) with limited physical, sensory or mental capabilities, nor by persons with limited experience and/or limited knowledge.
- Children should be supervised to ensure that they are not playing with or switching on the appliance.

EN

Improper Use

- Unintended or prohibited use may cause damage to the appliance.
- The appliance may only be used when its technical condition is flawless and allows for safe operation.
- The appliance may only be used when all connections are executed according to rules of law in force.
- The appliance may only be used when it is clean.
- Use only original spare parts. Never attempt to repair the appliance on your own.
- Do not introduce any changes in the appliance nor modify it.

1.3 Intended Use

As described below, every use of the appliance for a purpose differing and/or diverging from its intended standard use, is prohibited and considered to be an unintended use.

The following is an intended use:

- Venting and exhausting steams and vapours.

1.4 Unintended Use

An unintended use may lead to personal injuries or property damages caused by hazardous voltage, fire or high temperature. The appliance may only be used to perform tasks described in this instruction manual.

2 General information

2.1 Liability and Warranty

All information and instructions in this instruction manual account for legal regulations in force, current level of technical engineering knowledge as well as our expertise and experience, developed over the years. If special models or additional options are ordered, or state-of-the-art technical solutions were implemented, the actual scope of delivery of the appliance may, in some circumstances, differ from descriptions and numerous drawings in this instruction manual.

The manufacturer is not liable for any damages nor faults stemming from:

- failure to observe instructions,
- unintended use,
- technical alterations introduced by the user,
- usage of unapproved spare parts.

We reserve the right to introduce technical modifications to the product, intended for improvement of the appliance and its performance.

EN

2.2 Copyright Protection

This instruction manual, and texts, drawings and images included in it, as well as its other components are copyright protected. It is prohibited to reproduce this instruction manual (including its excerpts), in any form and by any means, and to use and/or transfer its content to third parties without manufacturer's written permission. Violation of the above results in obligation to pay compensation. We reserve the right to claim further damages.

2.3 Declaration of Conformity

The appliance meets the currently applicable standards and guidelines of the European Union. We confirm the above in the EC Declaration of Conformity. We may provide relevant Declaration of Conformity upon request.

3 Transport, Packaging and Storage

3.1 Delivery Check

Immediately upon reception, check the delivery for completeness and possible shipping damage. In the case of visible transport damage refuse to accept the appliance or accept it conditionally. Mark and note the scope of damage in shipping documents/consignment list of the shipping company and lodge a complaint. Concealed damage must be reported immediately upon its discovery, as compensation claims may only be filed within applicable time limits.

If you find that parts or accessories missing, please contact our Customer Service Department.

3.2 Packaging

Do not dispose of the appliance cardboard box. It may be used to store the appliance when relocating or when shipping the appliance to our service point in the case of any damages.

The packaging and its elements are made of recyclable materials. Particularly, these are: plastic films and bags, cardboard box.

When disposing of the packaging, observe applicable domestic regulations. Recyclable packaging materials should be recycled.

EN

3.3 Storage

Leave the packaging closed until installation of the appliance; observe external indications concerning method of placing and storage. Store the packaging in the following conditions only:

- in closed rooms;
- in dry and dust-free surrounding;
- away from aggressive agents;
- in a location protected against sunlight;
- in a location protected against mechanical shocks.

In the case of extended storage (over three months), make sure you check the condition of the packaging and the parts regularly. If needed, replace the packaging with a new one.

4 Technical Data

4.1 Technical Specifications

Extractor Hoods

Article No. / Model	Number of filters	Max. air throughput (m ³ /h)	Dimensions W x D x H (mm)	Weight (kg)
271107 700M-W1000	2	882	1000 x 700 x 450	48
271127 700M-W1200	2	1059	1200 x 700 x 450	54
271137 700M-W1300	2	1147	1300 x 700 x 450	57
271147 700M-W1400	2	1230	1400 x 700 x 450	60
271157 700M-W1500	2	1323	1500 x 700 x 450	63
271167 700M-W1600	3	1400	1600 x 700 x 450	65
271177 700M-W1700	3	1499	1700 x 700 x 450	70
271187 700M-W1800	4	1600	1800 x 700 x 450	76
271207 700M-W2000	4	1800	2000 x 700 x 450	83
271139 900M-W1300	2	1475	1300 x 900 x 450	63
271149 900M-W1400	2	1580	1400 x 900 x 450	50
271159 900M-W1500	2	1701	1500 x 900 x 450	67
271169 900M-W1600	3	1800	1600 x 900 x 450	71
271179 900M-W1700	3	1928	1700 x 900 x 450	74

Technical Data

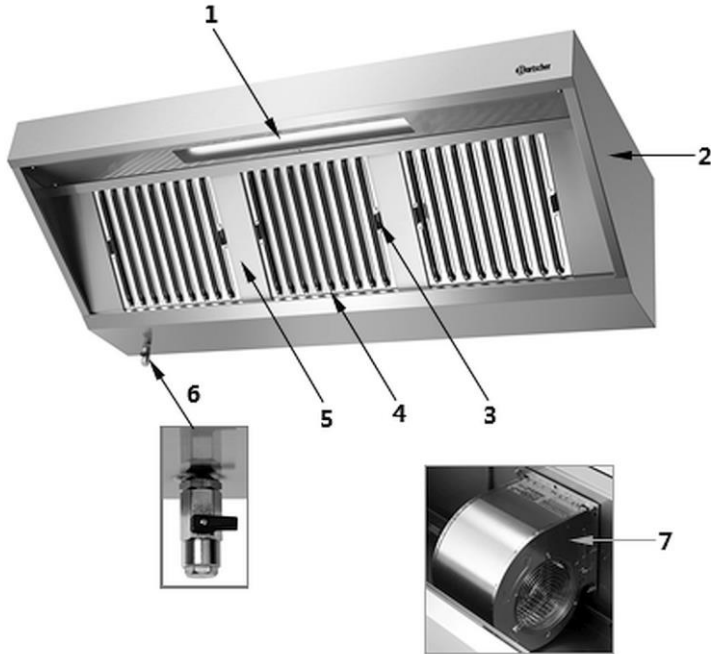
Article No. / Model	Number of filters	Max. air throughput (m ³ /h)	Dimensions W x D x H (mm)	Weight (kg)
271189 900M-W1800	4	2040	1800 x 900 x 450	77
271209 900M-W2000	4	2270	2000 x 900 x 450	85
271229 900M-W2200	4	2500	2200 x 900 x 450	91

We reserve the right to implement technical modifications.

Version / Characteristics

- Material: high-alloy steel;
- Power type: Exhaust air
- Mounting type: Wall mounting
- Flame protection filter: Type A
- Filter material: Stainless steel
- Protection class: IP54
- Number of fan motors/exhaust air outputs: 1
- Motor output: 145 W
- Fan control: Via external controller
- Opening for motor: 233 x 200 mm
- Connected load: 0.153 kW / 230 V / 50–60 Hz
- Lighting:
 - LED
 - integrated by means of non-dazzle installation
 - with grease protection cover
- Lights: 1 x 8 W
- Filter bracket
- Welded-on grease collection channel with discharge tap
- Can only be put into operation with additional controller
- Available on demand:
 - other dimensions
 - extractor hood with 1,100 mm depth
 - ceiling extractor hoods

4.2 List of Components of the Appliance



EN

- | | |
|-----------------------------------|----------------------------|
| 1. LED lighting | 2. Housing |
| 3. Flame protection filter holder | 4. Flame protection filter |
| 5. Partition | 6. Drain tap |
| 7. Motor | |

Fig. 1

4.3 Functions of the Appliance

Extractor hoods with integrated motors provide for high venting power over a large area. The appliances are adapted to wall mounting and equipped with LED lighting. To put them into operation, an external fan speed regulator is required.

5 Installation and operation

5.1 Installation



CAUTION!

Incorrect installation, positioning, operation, maintenance or misuse of the appliance may lead to personal injury or property damage.

Positioning and installation, as well as repairs may be performed by authorised technical service only and in compliance with the applicable national law.

NOTE!

The manufacturer disclaims all liability and provides no warranty for damages, which may be attributed to non-observance of regulations or incorrect installation.

Unpacking / Mounting

- Unpack the appliance, remove all external and internal packaging elements and shipment safeguards.



CAUTION!

Choking hazard!

Prevent children from accessing packaging materials, for instance: plastic bags and EPS elements.

- If the appliance is covered with a protective film, remove it. Remove the film slowly, so no glue residues are left. Remove any glue residues with the use of a suitable solvent.
- Be careful not to damage the rating plate and warning labels affixed to the appliance.
- The appliance should be installed in a room, in which ambient temperature falls in the range of +5°C – +60°C.
- Place the appliance in a manner making the connections easily accessible, so that they may be quickly disconnected if such a need arises.
- During installation, make sure ventilation openings are not covered nor blocked.
- Install the appliance in rooms with sufficient air circulation.

- When installing extractor hoods over gas or open-flame appliances, provide for sufficient air inflow.

Wall Mounting

The extractor hood must be located over an appliance (e.g. an oven, a grill plate, etc.).

The external side of the extractor hood must protrude 200–400 mm beyond a heating field.

The extractor hood must be located at the height of 1,900–2,000 mm over a floor and the distance to a heating field must be 1,000 mm.

The extractor hood is mounted to the wall with a specially enclosed installation brackets. During transportation, they are affixed to the housing of the appliance. Unscrew the installation brackets from the housing.

The location and number of installation brackets differ depending on the size of an appliance. The below figure presents a schematic view of the number and location of brackets in various models.

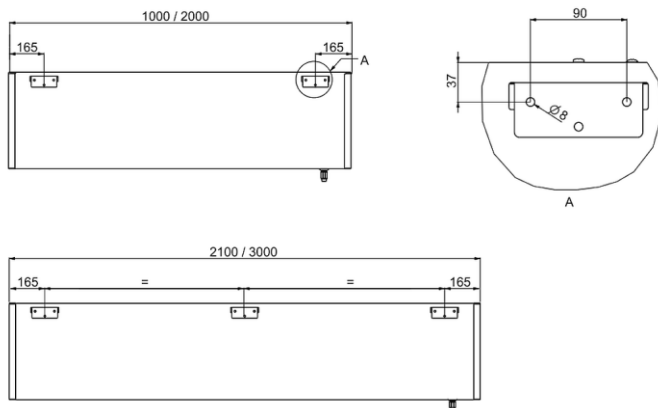


Fig. 2

1. Using information provided in the figure, mark points on the wall for boreholes.
2. Bore the holes.
3. Insert the studs into the bored holes.
4. Screw the appropriate number of installation brackets to the wall.
5. Hang the extractor hood on the installation brackets.

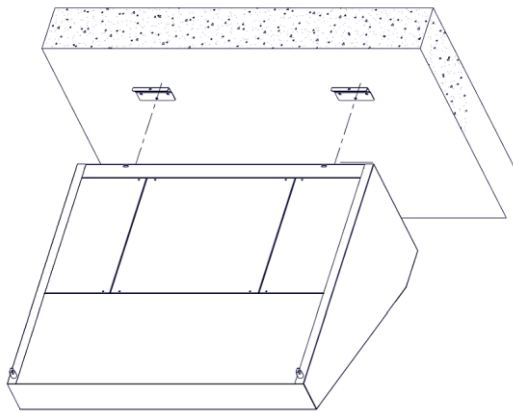


Fig. 3

EN

Ceiling Installing of Extractor Hoods

Check Fig. 4 to see how to safeguard the product for the purpose of additional stabilization.

NOTE!

In the case of 700 mm extractor hoods ceiling mounting is not required. Execute only wall mounting with the use of brackets.

1. For each fixing holder use M5 bolt, as presented in the figure (detail B).
2. Screw the enclosed eye bolts directly into the pre-prepared openings at the top edge of the extractor hood.
3. Anchor the front section of the extractor hood in the ceiling, using chains or cords (not in the set) and eye bolts (detail C).

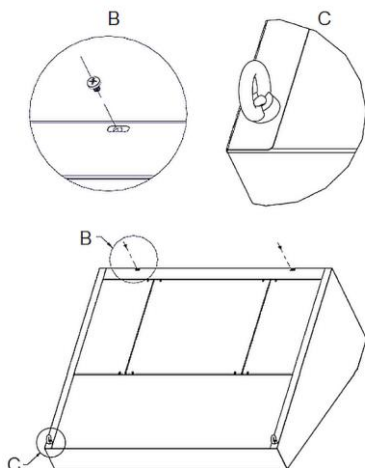


Fig. 4

EN Connection to Exhaust Air Installation

Extractor hoods are delivered without air outflow opening, thus they may be adapted to any needs.

1. Prepare an opening for an exhaust air installation connector suitable for the connector to be used.
2. Connect the extractor hood to the exhaust air installation, which is designed for the proper throughput of air exhausted by the appliance.

Drain Tap Installation

To facilitate transportation of the appliance, the drain tap is installed at the internal side of the housing.

1. Undo the drain tap.
2. Screw it to the external side of the housing.



Fig. 5

Flame Protection Filters Installation

1. Unpack the delivered flame protection filters and, if needed, partitions.

Flame protection filters are fitted in a specially formed fat collection element. The internal profile of the extractor hood is formed in a way making it possible for condensate/fat to accumulate in the fat collection channel and are delivered to the drain tap.

2. After installing the extractor hood on the wall, fit the appliance with flame protection filters and partitions (if needed):

- use the holders to fit the flame protection filters in the top guide-rail of the available opening first, then move them upwards as far as possible and let them slide to the bottom guide-rail.
- fit the partition between flame protection filters.

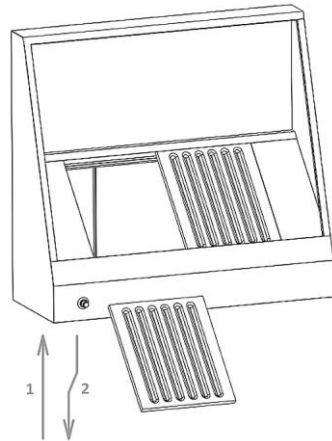


Fig. 6

EN

Connection — Electrical Power

- Verify if the technical specification of the appliance (see the rating plate) corresponds to the local electricity grid.
- The power cord should be laid in a way preventing anyone from threading on it or tripping against it.
- The appliance is supplied with a connection cable without a plug.
- It is of utmost necessity to install proper disconnector of all poles upstream of the appliance, so that — when needed — the appliance is quickly disconnected from power supply.
- Moreover, establish a correct grounding connection, according to safety regulations pertaining to electrical installation.

Electrical Power Connection — Extractor Hoods with Motors and Fan Speed Regulators

In the case of extractor hoods with motors and exhaust air volume control means, it is necessary to establish a connection via a fan speed regulator. It should be installed externally, wall-mounted, in an easily accessible location, next to the extractor hood.

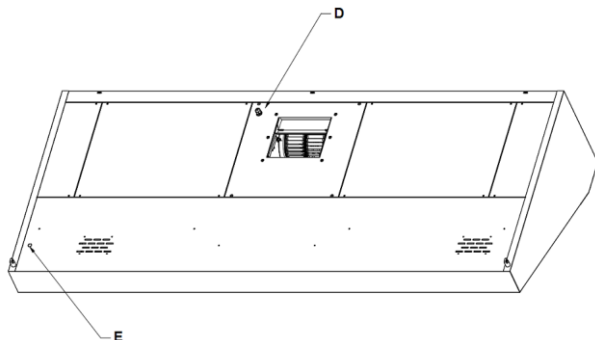


Fig. 7

EN

1. Pay attention to wiring outlets for connection cables (Fig. 7).
2. Connect the motor wire (D) and LED lighting wire (E) to a suitable fan speed regulator.

We recommend installing 1–2,200 fan speed regulator / art. No. 220120. Follow indications contained in manufacturer's instruction manual when establishing connection.

1–2,200 / 220120 Fan Speed Regulator (is not part of the delivery!)



Fig. 8

The fan speed regulator is equipped with ON/OFF switch and lighting switch.


Fan speed control is executed with fan speed regulator located at the front panel.

By removing the front panel of the fan speed regulator, you may access the terminal strip and execute connections for motor, lighting and magnetic valve.

The rocker switch marked with  provides for the possibility of concurrent switching the fan speed regulator and magnetic valve ON and OFF.

Installation and operation

The fan speed control is executed alike, with the use of the rotary controller on the front panel.

The rocker switch marked with  provides for the possibility of switching LED lighting ON and OFF, irrespective of the position of fan speed regulator.

NOTE!

Information about other settings of the fan speed regulator are provide in the manufacturer's instruction manual.

5.2 Operation

Preparation of the Appliance

1. Before use, clean the appliance, observing instructions in section 6 'Cleaning'.
2. Dry the appliance thoroughly.

Operation of the Appliance

1. Switch the appliance on with the installed disconnecter.

The extractor hood is switched on. Vapours are vented during preparation of food and exhausted by the exhaust air installation.

2. Use the fan speed regulator to set the required motor speed.
3. If needed, switch the LED lighting on, using the lighting switch, and setting it to 'I' position.
4. When the LED lighting is no longer needed, set the lighting switch to 'O' position.

Switching the Appliance Off

1. When the appliance is not to be used any more, it should be switched off with the installed disconnecter.

6 Cleaning and Maintenance

6.1 Safety Instructions for Cleaning

- Before cleaning, disconnect the appliance from the power supply.
- Leave the appliance to cool down completely.
- Make sure water does not enter the appliance. Do not immerse the appliance in water or other liquids during cleaning. Do not clean the appliance with a pressurized water jet.
- Do not use any sharp or pointed, nor metal implements (knife, fork, etc.). Sharp or pointed implements may damage the appliance, and when in contact with live parts, they may cause electric shock.
- For cleaning, do not use any scouring agents that contain solvents nor corrosive cleaning agents. They may damage the surface.

6.2 Cleaning

Housing

EN

1. Wash the appliance regularly.
2. Wipe the housing with a damp, soft cloth. Use mild cleaning agent if required.
3. For deposits, use plastic or wooden spatula.
4. Dry washed surfaces thoroughly afterwards.

Flame Protection Filters

If the extractor hood is used daily, flame protection filters must be cleaned at least once a week.

1. For the purpose of cleaning, flame protection filters and partitions (should they be fitted) should be removed from the appliance.
2. Remove flame protection filters, holding them by a handle and moving them upwards, so that they slide out of the bottom guide-rail. Rotate the flame protection filters slightly downwards to remove them completely.
3. Flame protection filters and partitions (should they be fitted) should be washed in hot water bath with an alkaline cleaning agent or in a dish-washing machine.
4. If needed, remove deposits using a soft brush for dish-washing.
5. Thoroughly dry flame protection filters.

Re-assemble in reverse order.

Emptying Grease Collection Channel

1. Empty the grease collection channel daily.
2. Open the drain tap and drain entire fat/condensate into a suitable container.
3. Close the drain tap.

6.3 Maintenance

ATTENTION!

All maintenance works with the appliance must be performed by qualified personnel only.

To keep the appliance operational, it must be subject to maintenance at least twice a year. The maintenance includes:

- verification of the condition of wear-and-tear elements;
- verification of connections;
- verification of appliance operation.

During maintenance, worn elements should be replaced to avoid subsequent service works and sudden failures of the appliance.

Additionally, we recommend signing an agreement for performance of maintenance works with a trusted and proven service company.

7 Possible Malfunctions


The table below contains descriptions of possible causes and solutions to malfunctions or errors during operation of the appliance. When malfunction cannot be removed, contact the technical service.

Error	Possible Cause	Solution
Appliance is not venting vapours	Appliance is not connected to the power supply	Connect the appliance correctly to the power supply
	Damaged external control and regulation system	Check correct operation of individual appliances
	Incorrect motor connection	Contact the service company
	Motor malfunction	Contact the service company
	Flame protection filter clogged	Remove the flame protection filter, clean it and reinstall in the appliance
LED light is not working	Faulty control system and external control	Check correct operation of individual appliances
	Incorrect light wiring	Contact the service company
	Incorrect light	Install correct light

EN

8 Disposal

Electrical Appliance

	<p>Electric appliances are marked with this symbol. Electrical appliances must be disposed of and recycled in a correct and environmentally friendly manner. You must not dispose of electric appliances with household waste. Disconnect the appliance from the power supply and remove power cord from the appliance.</p>
---	---

Electrical appliances should be returned to designated collection points.